

Kody Technologies LLC

Bike Rack Light – Hollywood



Congratulations on your purchase and thank you for your commitment to road safety for your bikes, friends, family, and those around you. Read and follow this instruction guide to install your new Hollywood Bike Rack Light.

Disclaimer

Tail, Brake and Turn signal lights are a critical safety feature during the operation of your vehicle. Rack lights increase your vehicle's visibility when the lights are obstructed by a bike rack, or any other device mounted to the rear of the vehicle. Please read and review all information carefully before installation. Install the light per the instructions and verify functionality on a regular basis. If you have any questions or concerns, please contact us at Kody Technologies.

- Always verify cable routing and connection and test light function prior to driving, using the light and relying on it for your safety.
- This light adds four pounds to the load on your bike rack. Check rack manufacturer's manual to verify the total load on the rack does not exceed any limits.
- Rack lights improve your visibility and signal communication on the road. They are not a substitute for driving safely and following all traffic laws.
- Kody assumes no liability for injury to persons, damage to movable or immovable property, loss of profit, or any other loss or damage caused by the improper mounting or use of the carrier, including but not limited to mounting or use in conflict with the assembly instructions, mounting instructions or any other instructions given, in writing or verbally, by Kody.

Kody Technologies LLC does not assume any responsibility or liability for accidents or injuries resulting during use of this product or misuse of this product.

Kody Technologies LLC
Protect Your Ride



Product Warranty

We've designed an extremely rugged rack light and are proud to provide a 1-year warranty on any failure on the electronics or hardware. If you experience any issues with your light please contact us, return it and we'll ship you a replacement.

Return Policy

If you are not 100% satisfied with the rack light, please contact us to let us know. We offer a 30-day hassle-free return policy. Return the light assembly in like-new condition and we'll ship you a replacement or refund your money. Most importantly we want to understand any issues you experience so we can address them, and we can continuously improve our products.

Any questions, ideas, or concerns? Please contact us at customerservice@kodytechnologies.com

www.kodytechnologies.com
Davis CA, 95618

Kody Technologies LLC

Bike Rack Light – Hollywood

Installation Instruction

Model#: 101-022

The rack light installs at the back of the rack using 2" U-bolts and lock nuts onto the rack's 2" square tube frame. It fits cleanly and does not affect any tray adjustment or bike loading.

Tools: Ratchet and ½" deep socket with extension or ½" box end wrench

1. Remove the black end cap and reflector using a Phillips screwdriver.



Remove End Cap & Phillips Screw

2. The light can be mounted on the top or bottom of the square tube pending your preferred light position. Decide top or bottom and which slots you plan to use then preinstall the U-bolts and lock nuts onto the bracket.

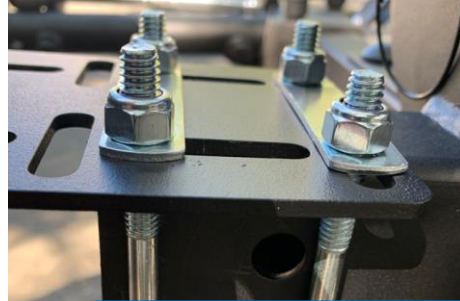


Preinstall hardware

Kody Technologies LLC
Protect Your Ride



3. Place the light on the rack end and position the bracket and U-bolts. Hold the light in place and tighten the lock nuts. While loose, the parts will squirm around but as they tighten you can set final position.



Place Light and Tighten Hardware

4. Route cable along length of rack to vehicle connection and use cable ties to secure the cable to the rack frame. Bike racks have many pivot points. Be sure to route the cable away from and around pivots to keep them from getting pinched.



Routed cable along rack and test the light.

5. Connect the light to your vehicle's trailer connection and test all light functions (tail, brake, hazard, left and right-hand turn signals).
6. If turn signals don't function correctly on your vehicle, please see the "How to" page on our website for LED Trailer Lights or contact us.

Any questions, ideas, or concerns? Please contact us at customerservice@kodytechnologies.com

www.kodytechnologies.com

Davis CA, 95618