

## Kody Technologies LLC

### Bike Rack Light – Thule T2 Classic



Congratulations on your purchase and thank you for your commitment to road safety for your bikes, friends, family, and those around you. Read and follow this instruction guide to install your new Thule T2 Classic Rack Light.

#### Disclaimer

Tail, brake and turn signal lights are a critical safety feature during the operation of your vehicle. Rack lights increase your vehicle's visibility when the lights are obstructed by a bike rack, or any other device mounted to the rear of the vehicle. Please read and review all information carefully before installation. Install the light per the instructions and verify functionality on a regular basis. If you have any questions or concerns, please contact us at Kody Technologies.

- Always verify cable routing and connection and test light function prior to driving, using the light and relying on it for your safety.
- This light adds four pounds to the load on your bike rack. Check rack manufacturer's manual to verify the total load on the rack does not exceed any limits.
- Rack lights improve your visibility and signal communication on the road. They are not a substitute for driving safely and following all traffic laws.
- Kody assumes no liability for injury to persons, damage to movable or immovable property, loss of profit, or any other loss or damage caused by the improper mounting or use of the carrier, including but not limited to mounting or use in conflict with the assembly instructions, mounting instructions or any other instructions given, in writing or verbally, by Kody.

Kody Technologies LLC does not assume any responsibility or liability for accidents or injuries resulting during use of this product or misuse of this product.



#### Product Warranty

We've designed an extremely rugged rack light and are proud to provide a 1-year warranty on any failure on the electronics or hardware. If you experience any issues with your light please contact us, return it and we'll ship you a replacement.

#### Return Policy

If you are not 100% satisfied with the rack light, please contact us to let us know. We offer a 30-day hassle-free return policy. Return the light assembly in like-new condition and we'll ship you a replacement or refund your money. Most importantly we want to understand any issues you experience so we can address them, and we can continuously improve our products.

Any questions, ideas, or concerns? Please contact us at [customerservice@kodytechnologies.com](mailto:customerservice@kodytechnologies.com)

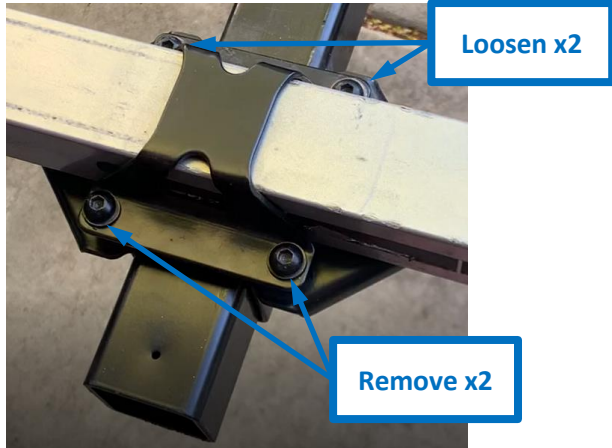
**Kody Technologies LLC**  
**Protect Your Ride**

[www.kodytechnologies.com](http://www.kodytechnologies.com)  
Davis CA, 95618

## Installation Instruction

**Model #: 101-015**

1. The light installs to the last bike tray mount on the rack. It uses the existing hardware, fits cleanly and does not affect any tray adjustment.
2. Loosen the four screws holding the last bike tray in place. Remove the two screws on the end of the rack where the light will be installed.



3. Set the bracket in place between the upper and lower brackets. Adjust bike tray to desired location if needed.



4. Install the rear most screws with washers (provided) between the light bracket and the upper rack bracket. Tighten all four screws evenly to clamp the light and tray in place while keeping the light centered on the frame.

5. Once all four screws are tight check for play in both the light bracket and the bike tray. Both should be secure with zero movement or play.



6. Route cable along the length of the bike rack and secure with the provided cable ties. Bike racks have many pivot points. Be sure to route the cable away from and around pivots to keep them from getting pinched.



7. Connect the light to your vehicle's power supply and test all light functions (tail, brake, hazard, left and right-hand turn signals).
8. If turn signals do not function correctly on your vehicle, please see the "How to" page on our website for LED Trailer Lights or contact us.

Any questions, ideas, or concerns? Please contact us at [customerservice@kodytechnologies.com](mailto:customerservice@kodytechnologies.com)