

## Kody Technologies LLC

### Bike Rack Light – Thule EasyFold



Congratulations on your purchase and thank you for your commitment to road safety for your bikes, friends, family, and those around you. Read and follow this instruction guide to install your new Thule T2 EasyFold Rack Light.

#### Disclaimer

Tail, brake and turn signal lights are a critical safety feature during the operation of your vehicle. Rack lights increase your vehicle's visibility when the lights are obstructed by a bike rack, or any other device mounted to the rear of the vehicle. Please read and review all information carefully before installation. Install the light per the instructions and verify functionality on a regular basis. If you have any questions or concerns, please contact us at Kody Technologies.

- Always verify cable routing and connection and test light function prior to driving, using the light and relying on it for your safety.
- This light adds four pounds to the load on your bike rack. Check rack manufacturer's manual to verify the total load on the rack does not exceed any limits.
- Rack lights improve your visibility and signal communication on the road. They are not a substitute for driving safely and following all traffic laws.
- Kody assumes no liability for injury to persons, damage to movable or immovable property, loss of profit, or any other loss or damage caused by the improper mounting or use of the carrier, including but not limited to mounting or use in conflict with the assembly instructions, mounting instructions or any other instructions given, in writing or verbally, by Kody.

Kody Technologies LLC does not assume any responsibility or liability for accidents or injuries resulting during use of this product or misuse of this product.

**Kody Technologies LLC**  
**Protect Your Ride**



#### Product Warranty

We've designed an extremely rugged rack light and are proud to provide a 1-year warranty on any failure on the electronics or hardware. If you experience any issues with your light please contact us, return it and we'll ship you a replacement.

#### Return Policy

If you are not 100% satisfied with the rack light, please contact us to let us know. We offer a 30-day hassle-free return policy. Return the light assembly in like-new condition and we'll ship you a replacement or refund your money. Most importantly we want to understand any issues you experience so we can address them, and we can continuously improve our products.

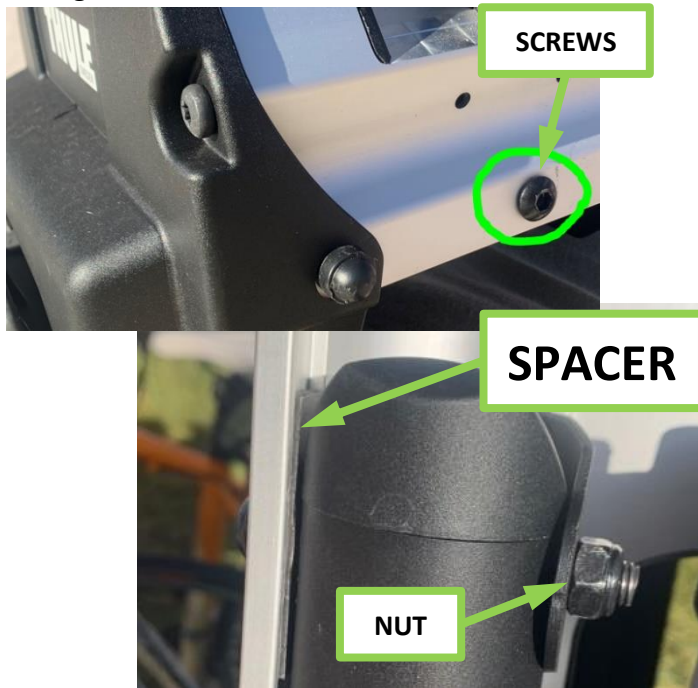
Any questions, ideas, or concerns? Please contact us at [customerservice@kodytechnologies.com](mailto:customerservice@kodytechnologies.com)

[www.kodytechnologies.com](http://www.kodytechnologies.com)  
Davis CA, 95618

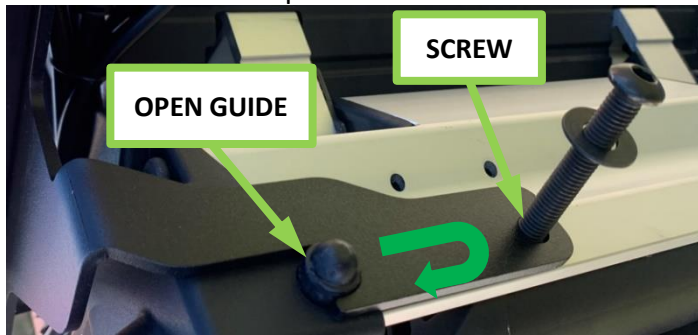
## Installation Instruction

Model #: 101-019

1. The light installs to screws on the sides of the main frame of the rack. It uses new hardware in current locations, fits cleanly and does not affect any rack operation. It's best to work with access to the bottom of the rack.
2. Remove the two screws and nuts. Be careful with the spacer sandwiched between the aluminum rail and tube (it slides in the rail). The screws fit tight and need to be twisted to remove.



3. Set the bracket in place lining up the screw hole and open guide. Slide the bracket back, down, and then pull forward to engage the open guide onto the screw cap.



4. Install the longer screws with washers (provided). Position the spacer (might have slid down the rail) and align all the holes. The hole openings are tight, so alignment is a little tricky and you'll need to twist the screw into place as the holes align.
5. Install the nut and tighten the screws into the nuts until you see the bracket clamp flush.



6. Route cable along the center of the bike rack and secure with the provided sticky pads and cable ties. Route the cable away from and around all pivots to keep from pinching and provide slack for movement.



7. Connect the light to your vehicle's power supply and test all light functions (tail, brake, hazard, left and right-hand turn signals).
8. If turn signals do not function correctly on your vehicle, please see the "How to" page on our website for LED Trailer Lights or contact us.

Any questions, ideas, or concerns? Please contact us at [customerservice@kodytechnologies.com](mailto:customerservice@kodytechnologies.com)